

# A NIGHT WITH JANIS JOPLIN

Friday, October 12, 2018; 7:30 pm

Saturday, October 13, 2108; 2 & 7:30 pm

Sunday, October 14, 2018; 2 & 7 pm

## A NIGHT WITH JANIS JOPLIN

Produced by West Coast Productions, LLC

A Night with Janis Joplin is presented in further association with The Estate of Janis Joplin and Jeffrey Jampol of JAM, Inc.

Created, Written, and Directed by Randy Johnson

### Featuring

Mary Bridget Davies

Choreographer: Patricia Wilcox

Set Design: Brian Prather

Costume Design: Amy Clark

Lighting Design: Ryan O'Gara

Sound Design: Cliff Verhoeff

Projection Design: Darrel Maloney

Wig and Makeup Design: Leah J. Loukas

Music Director: Alex Prezzano

Original Music Arrangement: Len Rhodes

Production Stage Manager: Hethyr (Red) Verhoef

General Manager/Premiere General Management: Daniel Chilewich

Company Manager/Co-General Manager: Kevin Beebee

Marketing Director: Tara Shisler

### CAST

Janis Joplin..... Mary Bridget Davies (Evening Performances)

Janis Joplin (Understudy/Swing).....Paige McNamara (Matinee Performances)

### The Joplinaires:

Featured as Odetta, Bessie Smith, Chantel..... Aurianna Angelique

Featured as Blues Woman, Aretha Franklin, Nina Simone, Chantel.....Ashley Tamar Davis

Featured as Etta James, Chantel.....Tawny Dolley

Featured as Blues Singer, Chantel..... Jennifer Leigh Warren

*A Night with Janis Joplin will be performed with one intermission*

### Stage Manager

Hethyr (Red) Verhoef

### Assistant Stage Manager

Jessica Aguilar

### Second Assistant Stage Manager

Julie Ann Renfro

### Dance Captain

Tawny Dolley

### Original Broadway Producers

Daniel Chilewich, Todd Gershwin, Michael Cohl,

Jeffrey Jampol, Red Tail Entertainment, Stephen Tenenbaum, Michael J. Moritz, Jr./Brunish & Trincherro, Richard Winkler, Ginger Productions,

Bill Hamm, Claudio Loureiro, Keith Mardak, Ragovoy Entertainment, Rob & Laurie Wolfe/ Neil Kahanovitz, Jerry Rosenberg/Al Michaels,

Mike Stoller & Corky Hale Stoller, Darren P. DeVerna, Susan DuBow, Tanya Grubich, Jeremiah H. Harris and Herb Spivak

# A NIGHT WITH JANIS JOPLIN continued

Produced in 2012 by Cleveland Play House.

Michael Bloom, Artistic Director / Kevin Moore, Managing Director

Produced in 2012 by Arena Stage. Molly Smith, Artistic Director / Edgar Dobie, Executive Director

The 2011 world premiere of *One Night with Janis Joplin* was produced and performed at Portland Center Stage, OR. Chris Coleman, Artistic Director.

Please turn off all electronic devices for the duration of the performance. Please refrain from text messaging during the performance.

The use of recording equipment or the taking of photographs during the performance is strictly prohibited.

No food or smoking is allowed in the theater at any time.

## MUSICAL NUMBERS

### Act One

|  |  |
|--|--|
| Combination of the Two.....                    | The Joplinaires and the Band                       |
| Tell Mama.....                                 | Janis Joplin, Etta James, and the Joplinaires      |
| My Baby.....                                   | Janis Joplin and the Band                          |
| Maybe.....                                     | The Chantels                                       |
| Summertime.....                                | Blues Woman  |
| Summertime.....                                | Janis Joplin                                       |
| Turtle Blues.....                              | Janis Joplin                                       |
| Down on Me.....                                | Odetta   |
| Down on Me.....                                | Janis Joplin                                       |
| Piece of My Heart.....                         | Janis Joplin and the Joplinaires                   |
| Today I Sing the Blues.....                    | Blues Singer                                       |
| Nobody Knows You When You're Down and Out..... | Bessie Smith                                       |
| Spirit in the Dark.....                        | Aretha Franklin, Janis Joplin, and the Joplinaires |

### Act Two

|                                       |   |
|---------------------------------------|---|
| Entr'acte.....                        | The Band  |
| Try (Just A Little Bit Harder).....   | Janis Joplin and the Band                               |
| Maybe.....                            | Janis Joplin and the Band                               |
| Little Girl Blue.....                 | Nina Simone and Janis Joplin                            |
| Cry Baby.....                         | Janis Joplin  |
| Kozmic Blues/I Shall Be Released..... | Blues Singer, Nina Simone, Bessie Smith, and Etta James |
| Me and Bobby McGee.....               | Janis Joplin  |
| I'm Gonna Rock My Way to Heaven.....  | Janis Joplin and the Band                               |
| Ball and Chain.....                   | Janis Joplin  |
| Stay With Me.....                     | Janis Joplin and the Joplinaires                        |
| I'm Gonna Rock My Way To Heaven.....  | Janis Joplin, the Joplinaires, and the Band             |
| Mercedes Benz.....                    | Janis Joplin  |

### The Band

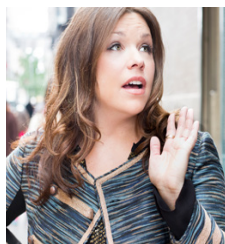
|                |                    |
|----------------|--------------------|
| Keyboard.....  | Jesse Kapsha       |
| Guitar 1.....  | Alexander Prezzano |
| Guitar 2.....  | Nick Novelli       |
| Bass.....      | Chase Flemming     |
| Drums.....     | PJ Holaday         |
| Saxophone..... | Chris Smucker      |
| Trumpet.....   | Timothy Weiss      |
| Trombone.....  | Mike Mulligan      |

### The Crew

|  |
|--|
| Steve Wilson – Technical Director/Head Carpenter |
| Steve Marabello – Assistant Carpenter            |
| Sam Lewis – Backline/Video                       |
| Ryan J. Stofa – Master Electrician/Follow Spot   |
| Henry Wilen – Master Electrician/Board Operator  |
| Cliff Verhoeff – Sound Engineer                  |
| Jackie Keegan – Wardrobe Supervisor              |
| Shana Roma – Assistant Wardrobe Supervisor       |
| Michael King – Wig Supervisor                    |

# A NIGHT WITH JANIS JOPLIN continued

## BIOS



**MARY BRIDGET DAVIES** (*Janis Joplin*) is an American singer and actress. She performs with her own band, Mary Bridget Davies, and is also an interpreter of Janis Joplin's music. She received a Tony Award nomination for Best Lead Actress in a Musical for her performance as Janis in *A Night with Janis Joplin*. Her band The Mary Bridget Davies Group released an album with original songs

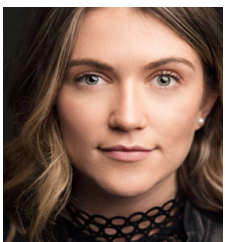
in 2012 titled *Wanna Feel Some-thin*.

She trained first as a dancer, touring with dance productions as a child working with Tina Landon, and later began singing and acting. Davies has studied improv with The Second City in Cleveland, and is also a member of the Something Dada Improv Group in Cleveland. After college, Davies started singing at blues jams in Cleveland around 2002. Also during this time, she worked as a dance instructor at Dance Dimensions in Ohio with Jen Naso. In 2005, she auditioned and landed the lead role for a touring production of *Love, Janis*. She has toured in Europe with Janis Joplin's original band, Big Brother and the Holding Company, and has formed her own band, titled The Mary Bridget Davies Group that tours in festivals and clubs worldwide.

In 2012, Davies took over the lead role in *A Night with Janis Joplin* on tour, and stayed with the show when it moved to Off-Broadway and eventually Broadway in 2013, closing February 9, 2014. Davies was nominated for a Tony Award for Best Lead Actress in a Musical for her performance. She had previously been nominated in 2013 for a Helen Hayes Award for Best Lead Actress in a Musical. Davies has also performed in a tour of the Broadway musical revue *It Ain't Nothin' But the Blues*.

Ms. Davies recent performances were at SXSW and a week-long residency in Pasadena, CA where she was joined by The Doors' Robby Krieger, Slash, The MC5's Wayne Kramer, Dave & Phil Alvin of The Blasters, Bob Mothersbaugh of DEVO, Ty Taylor of Vintage Trouble, Doug Pinnick of King's X, and members of Tom Morello's Nightwatchmen and Gnarlz Barkley.

Davies reprised her role as Janis Joplin in *A Night with Janis Joplin* for the First National North American Tour boasting sold-out shows across the country and Canada, performing 63 shows in 11 weeks. Davies has lived and performed in Kansas City, New York City, and currently lives in Cleveland. In late 2017, she gave birth to her first child, a son.



**PAIGE MCNAMARA** (*Janis Alternate/Swing*) Paige has toured the country and world in Broadway hits *Mamma Mia!* and *Sister Act*, and is honored to be back on the road with *Janis*. Regional: *A Night With Janis Joplin* (La Mirada Theater, Ivoryton Playhouse, North Carolina Theater) and North Shore Music Theatre. Proud Wagner College Alum. Endless thanks to Randy and

the ANWJJ team, the Baker team, Noel, Mom, Dad and the boys! For TFM.



**AURIANNA ANGEЛИQUE** (*Odetta, Bessie Smith, Chantel*) Aurianna is thrilled to be reprising her role in *Janis!* Aurianna is a native of southern California. Some of her most recent credits include: Deloris in *Sister Act*, *Smokey Joe's Cafe*, Stage West's *Rumours and Dreams* and *Love Train*. Aurianna had the pleasure of playing Effie White in The Arts Club production of *Dreamgirls* as well as

Motormouth in *Hairspray* at Mayfield. Other credits: Off Broadway – *Sistas The Musical*, Disney Cruise Line, *Show Boat*, *South Pacific* and many more! She would like to thank God for her continued blessings and friends and family for their continued support! Enjoy The Show!!



**ASHLEY TÁMAR DAVIS** (*Aretha Franklin, Nina Simone, Blues Woman, Chantel*), known as the muse and protégé of Prince, gained notoriety for co-writing their Grammy Award-nominated duet, "Beautiful, Loved and Blessed." A graduate of University of Southern California's Thornton School of Music, Davis recently starred as Sarah Vaughan

in *Sarah Sings a Love Story* (Crossroads Theatre Company). She appeared on NBC's *The Voice*, debuted in the first national tour of *Motown: The Musical*, and has performed in numerous Tyler Perry/Lionsgate productions. Davis has commercially released two independent albums, *I Am the Storm* and *My Name Is Tamar*, via her company, Syren Music Group. Davis is also the founder of three edu-tainment initiatives: the College, Career, and Empowerment Summit, and the Syren Arts Academy. [www.TamarDavis.com](http://www.TamarDavis.com)



**TAWNY DOLLEY** (*Etta James, Chantel, Joplinaire*) has entertained audiences around the globe, sharing the stage with musical artists Estelle, Solange, Rachel Platten, John Legend, and the legendary band Vintage Trouble. She's performed on *The Ellen DeGeneres Show*, *The Wendy Williams Show*, *The Late Late Show*, *The Talk*, *The Late Show*, and *The Tonight Show*. Dolley played

Etta James to critical acclaim in the first national tour of *A Night with Janis Joplin* alongside Tony Award nominee Mary Bridget Davies. Other regional credits: *Dreamgirls*, *Once on This Island*, *Smokey Joe's Cafe*, *Parade*, *Fame*, *Big River*, and *For the Record: Tarantino*. Tawny currently stars in *Vegas! The Show* at Planet Hollywood Resort in Las Vegas and tours regularly with the band Vaud & The Villains. She also sings with pop acapella group, Vybration. [www.tawnydolley.com](http://www.tawnydolley.com)

# A NIGHT WITH JANIS JOPLIN

continued



**JENNIFER LEIGH WARREN** (*Blues Singer, Lead Chantel, Joplinaire*) Broadway/Off-Broadway: the original Alice's Daughter in *Big River* ("How Blest We Are" written for her by Roger Miller), the original Crystal in the Alan Menken/Howard Ashman hit *Little Shop of Horrors*, the original *Lonesome Traveler* and *Marie Christine*. She performed with *Broken Bells*, *The Kills*,

*Trombone Shorty*, *Moon Taxi* and Lisa Loeb on *The Tonight Show*, *CONAN* and *Jimmy Kimmel*. She received rave reviews for her performance of the Blues singer at Houston's Alley Theater, North Carolina Theater, Ivoryton Playhouse and the 1st & 2nd National and Canadian tours of *A Night with Janis Joplin*. Awards: NAACP Theatre, Ovation, Backstage, Broadway World, Dartmouth Arts. [www.JenniferLeighWarren.com](http://www.JenniferLeighWarren.com)

**JANIS JOPLIN:** That voice — high, husky, earthy, explosive — remains among the most distinctive and galvanizing in pop history. But Janis Joplin didn't merely possess a great instrument; she threw herself into every syllable, testifying from the very core of her being. She claimed the blues, soul, gospel, country, and rock with unquestionable authority and verve, fearlessly inhabiting psychedelic guitar jams, back-porch roots, and everything in between. Her volcanic performances left audiences stunned and speechless, while her sexual magnetism, world-wise demeanor, and flamboyant style shattered every stereotype about female artists — and essentially invented the "rock mama" paradigm. But California drew her back into its glittering embrace in 1966 when she joined the Haight-based psychedelic rock band Big Brother and the Holding Company. Her adoption of a wild sartorial style — with granny glasses, frizzed-out hair and extravagant attire that winked, hippie-style, at the burlesque era — further spiked her burgeoning reputation. And from there, the rest is history. In the years since her passing, Janis Joplin's recordings and filmed performances have cemented her status as an icon, inspiring countless imitators and musical devotees. Myriad hit collections, live anthologies, various commercials, and a hit Broadway show have kept her legend alive.

**RANDY JOHNSON** (*Writer, Director, Creator*) Writer and director of the Tony-nominated production of *A Night with Janis Joplin*. A 30-year career that is complex, definable, and undefinable at the same time. As varied as it is diverse, he has broken career barriers, made and seen history first hand, all while being consistently committed to his artistic core values. His most recent work *Shout Sister Shout*, based on the life of rock and roll/gospel trailblazer Sister Rosetta Tharpe, premiered this summer at the Pasadena Playhouse to rave reviews and record breaking attendance. "Randy Johnson certainly doesn't lack for ambition or vision, or social conscience. In the strictest sense of the word, he isn't a theater director — that might be too much of a constricted space for him, although he's certainly succeeded in almost every medium including: Broadway, Off-Broadway, regional theater, and the concert world. If there is a trademark for Randy Johnson's productions, it's that they're going to be nothing that you might expect." (*The New York Times*) [www.randy-johnson1.com](http://www.randy-johnson1.com)

**JESSICA R. AGUILAR** (*Assistant Stage Manager*) is grateful to hit the road with *A Night with Janis Joplin*, having previously worked on productions of ANWJJ both pre and post Broadway. Previous works include: Pasadena Playhouse: *Our Town*, *The Originalist*, *Fly*, *Real Women Have Curves*, *Stop Kiss*, *12 Angry Men*; Geffen Playhouse: *Reasons to be Pretty*, *Death of the Author*; Marin Theatre Company: *Fences*, *In the Red & Brown Water*; LATC: *Devil's Advocate*, *Dementia*; Cygnet Theatre: *Man of La Mancha*, *Hedwig & the Angry Inch*. She is a proud member of AEA, a fitness enthusiast and an avid SF Giants fan. Thanks to her F&F-SA<sup>2</sup>-HW-PA-ML-MQH-JK<sup>2</sup>-MA. XO to TB!

**KEVIN BEEBEE** (*Company Manager*) is pleased to be back on the road with ANWJJ. For the past decade, Kevin has been managing shows on Broadway and their national tours. Along with *Janis* last year, other shows he has managed are *WICKED*, *The Book of Mormon*, *Nice Work If You Can Get It* - starring Matthew Broderick and Kelli O'Hara; *Curtains the Musical* - starring David Hyde Pierce and Debra Monk; *MAMMA MIA!*, *Legally Blonde*, *Blue Man Group*, and *Stomp*. Kevin also is the Founding Managing Director for Titan Theatre Company, one of New York City's newest and most successful theatre companies nestled in the beautiful borough of Queens. Kevin is an alumni of Bowling Green State University where he worked towards his Bachelor of Arts In Theatre with an emphasis in Arts Management.

**AMY CLARK** (*Costume Design*) has designed for the Broadway productions of *A Night with Janis Joplin* and *Chaplin* (Drama Desk and Outer Critics Circle nominations). Off-Broadway: *Himself and Nora*, *Stupid Fucking Bird*, *Heathers: The Musical*, *Cagney, Unlock'd*, *Animals Out of Paper*, *All This Intimacy*, *Jayson with a Y*, *Dreams of the Washer King*, *Apple Cove*, and *Dramatis Personae*. Other select designs: *Romy and Michele's High School Reunion: The Musical*, *Vocalosity*, *Ringling Bros. and Barnum & Bailey Circus*, and *On Your Toes* at New York City Center Encores! She was awarded the 2012 Theatre Hall of Fame Emerging Artists fellowship. Clark has an MFA from NYU.

**LEAH J. LOUKAS** (*Hair and Makeup Design*) has designed for *Sweat*; *Natasha, Pierre & the Great Comet of 1812*; *The Heidi Chronicles*; *On the Town*; *A Night with Janis Joplin*; *Vanya and Sonia and Masha and Spike*; *American Idiot*; and *Irena's Vow on Broadway*. Off-Broadway, she has designed for *Barbecue and Fortress of Solitude* (The Public), *Love's Labour's Lost* and *Into the Woods* (The Public's Shakespeare in the Park), and *Heathers: The Musical*, *Bare: The Musical*, *Carrie: The Musical*, *Tribes*, and *Our Lady of Kibeho* (Signature Theatre). Loukas has a BFA in theater design and production with a focus in makeup and wig design from the University of Cincinnati.

**DARREL MALONEY** (*Projection Design*) has designed for broadcast, concerts, film, and theater. Broadway: *A Night with Janis Joplin*, *American Idiot*, *On Your Feet!*, *Allegiance*, *Everyday Rapture*, *The Illusionists*. Off-Broadway: *Found* (Atlantic Theater; Drama Desk nomination); *Checkers* (Vineyard Theatre, Drama Desk nomination); *Tappin' Thru Life* (Drama Desk nomination); *Joan of Arc: Into the Fire* (The Public); *Pretty Filthy* (The Civilians); *Kung Fu*, *Golden Child* (Signature Theatre); *The Village Bike*, *The Submission* (MTC); *Bikeman: A 9/11 Play*, *Kansas City Choir Boy* (PROTOTYPE, A.R.T, Center Theatre Group); and Karen O's *Stop*

# A NIGHT WITH JANIS JOPLIN continued

*the Virgens* (St. Ann's Warehouse, Sydney Opera House). Darrel is also the founder of the design and production company, The 13th Studios. [www.darrelmaloney.com](http://www.darrelmaloney.com)

**RYAN J. O'GARA** (*Lighting Designer*) National Tour: *Vocalocity, Walking Dead Experience, The Little Prince*. NYC: *Sanctuary, Tail Spin, USELESS, Lady Day, Moses of Egypt*-New York City Opera, *Little Prince, Knuckle Heads Zoo, Black Violin, Pinkolandia, PS Jones, Chix 6, Raw Space, THE RIDE*, various productions for Paper Mill Playhouse, Walnut Street Theatre, Drury Lane-Chicago, Signature Theatre DC, Laguna Playhouse, Barter Theatre, Sonnet Repertory Company, Lincoln Center Festival, Westbeth Theatre Center, Capital Repertory Theatre and Bristol Riverside Theatre (2016 Barrymore Award). Dance: American Ballet Theatre, Hubbard Street Dance Chicago, MOMIX, gloATL, Ballet Hispanico, Cedar Lake Ensemble, Dance Works, *Revolution* at the Joyce Theatre. Corporate: NBCU upfront 2016 @ Radio City Music Hall, *Celebrity Apprentice*, Michael Kors Jet Set Launch, Antonio Banderas Fragrance Launch, Nike Rockstar Workout. On Broadway he has served as the Associate Lighting Designer for: *Come from Away, Bronx Tale, Paramour, Hamilton, Dr. Zhivago, Honeymoon in Vegas, After Midnight, A Christmas Story, Jesus Christ Superstar, Magic/Bird, How to Succeed..., Lombardi, Million Dollar Quartet, West Side Story, Cry Baby, Gypsy, In the Heights, Xanadu, LoveMusik* and *Avenue Q*. O'Gara graduated from North Carolina School of the Arts. [www.ryanogara.com](http://www.ryanogara.com)

**ALEX PREZZANO** (*Music Director*) is a guitarist based in New York City. He's been an active bandleader, songwriter, sideman, pit orchestra and session musician since 2012, after studying classical guitar throughout New England and California. Prezzano joined *A Night with Janis Joplin* in October 2017 as guitarist at the McCarter Theatre in Princeton, NJ, the 2nd National Tour and most recently, at La Mirada Theatre in Los Angeles, CA. Visit [www.alexprezzano.com](http://www.alexprezzano.com) or follow on Facebook, Instagram: @alexprezzano

**LEN RHODES** (*Original Music Arrangements*) received diplomas from the Royal Academy of Music and London College of Music, with continuing studies in composition at the University of London. He is a fellow of the Incorporated Society of Musicians (U.K.). Rhodes is artistic director of and artist-in-residence with Summit Music and Arts in Colorado. Compositions, arrangements, and commissions include work for BBC Radio, Trinity College London, John F. Kennedy Center for the Performing Arts, and the Virginia Shakespeare Festival. His recent piano quintet arrangement of "MacArthur Park" is available worldwide through Music Sales Ltd. and Hal Leonard Corporation. Rhodes is currently signed as a recording artist with Burning Girl Records (U.K.).

**BRIAN PRATHER** (*Scenic Design*) Recent Off-Broadway designs include: *Daniel's Husband* (Primary Stages), *Widower's Houses* (TACT/Gingold), *A Christmas Carol* (St. Clement's), *Becoming Dr. Ruth* (Westside), *The Memory Show* (Transport Group), *Freud's Last Session* (New World Stages), *Nymph Errant* (Prospect Theater), and *The Burnt Part Boys* (Playwrights Horizons). Internationally Brian has designed at the Chung-mu Art Hall (South Korea) and at regional and other theatres including:

the Alley Theatre, Goodspeed Musicals, Barrington Stage Co., TheaterWorks Hartford, Virginia Rep., Mercury Theatre, Delaware Theatre Co., Shakespeare on the Sound, among many others. He was awarded the Joseph Jefferson Award (Chicago) for Set Design and an Emmy nomination (New England) for the design of "The Kate" concert series on PBS. Brian is an Associate Artist at Barrington Stage Co. (MA) and a proud member of USA Local 829. See Brian's work at [www.brianprather.com](http://www.brianprather.com).

**HETHYR (RED) VERHOEF** (*Production Stage Manager*) Having toured with *A Night with Janis Joplin* regionally and nationally, Hethyr is thrilled to bring it to California. Hethyr has worked as a stage manager and flyman over the years and continues to be deeply invested in theater, art, and all the elements it takes to create it. In the words of Janis: "Don't compromise yourself. You're all you've got."

**PATRICIA WILCOX** (*Choreographer*) Broadway: *A Night with Janis Joplin, Motown* (Astaire Award and NAACP Award). Off-Broadway/national tours: *Little Shop of Horrors* (Encores/City Center starring Jake Gyllenhaal), *Children's Letters to God, Bowfire* (and PBS TV special), *Blues in the Night* (NAACP Nomination), *Seussical*. West End/London: *Motown*. Select regional: *A Swell Party* (Kennedy Center), *The Secret Garden* (Denver Theatre Center), *Bye Bye Birdie* (Goodspeed Opera House), *Peter and the Starcatcher* (Pioneer Theatre Company), *Pirates of Penzance* (Missouri Rep), *Aida* (NSMT), *Cabaret* (Sacramento Music Circus), *Hair* (Arizona Theatre Company), and *Guys and Dolls* (Paper Mill Playhouse).



PHOTO BY JOAN MARCUS

# A NIGHT WITH JANIS JOPLIN continued



PHOTO BY JOAN MARCUS

## Music Credits

"Ball and Chain" written by Willie Mae Thornton. Published by Bro 'n Sis Music, Inc. (ASCAP) c/o Carlin America, Inc. Used with permission. "Today I sing the Blues" written by Curtis Reginald. Used with permission. "Combination of the Two" written by Sam Andrew. Published by Cheap Thrills Music (ASCAP). Used with permission. "I Shall Be Released" written by Bob Dylan. Published by Dwarf Music (ASCAP). Used with permission. "Tell Mama" by Clarence George Carter, Marcus Lewis Daniel and Wilber Terrell. Published by EMI-Screen Gems Musk (BMI). Used with permission. "Maybe" by Richard Barrett. Published by EMI Longitude Music (BMI). Used with permission. "Me and Bobby McGee" written by Fred L. Foster and Kris Kristofferson. Published by Combine Music Corp (BMI) administered by EMI Music Publishers. Used with permission. "Little Girl Blue," music by Richard Rogers, lyrics by Lorenz Hart. This selection is used by special arrangement with Rodgers & Hammerstein and Imagem Company, www.rnh.com. All rights reserved. "Kozmic Blues" written by Janis Joplin and Gabriel Mekler. Published by Strong Arm Music (ASCAP) and Universal Music Pub-lishers (ASCAP). Used with permission. All rights reserved. "Turtle Blues" written by Janis Joplin and published by Strong Arm Music (ASCAP) and Universal Music Pub-lishers (ASCAP). Used with permission. All rights reserved. "Down on Me" written by Janis Joplin. Published by Strong Arm Music (ASCAP). Used with permission. All rights reserved. "Mercedes Benz" written by Janis Joplin, Michael McClure and Robert Neuwirth. Published by Strong Arm Music (ASCAP). Used with permission. All rights reserved. "Summertime" from Porgy and Bess, words and music by George Gershwin, DuBose and Dorothy Heyward and Ira Gershwin. Copyright (1935) (renewed), Nokawi Music (ASCAP). Administered in the United States by Raleigh Music Publishing, LLC and Music Sales Corp. for George Gershwin Music and DuBose and Dorothy Hey-ward Memorial Fund and WB Music for Ira Gershwin Music. Used with permission. International copyright secured. All rights reserved. "I'm Gonna Rock My Way to Heav-en", written by Jerry Ragovoy and Jenny Dean. Published by the Tune Room (ASCAP). Used with permission. "Nobody Knows You When You're Down and Out" by James Cox. Published by Universal Music Publishers (ASCAP). Used with permission. "Try Just a Little Bit Harder" written by Jerry Ragovoy and Chip Taylor. Published by Unichappell Inc. (BMI). Used with permission. "Stay with Me" written by Jerry Ragovoy and George David Weiss. Published by Chappell & Co (ASCAP). Used with permission. "A Woman Left Lonely" written by Spooner Oldham and Dan Penn. Published by Embassy Music Corp. (BMI) and Dan Penn Music (BMI). "Cry Baby" written by Jerry Ragovoy (aka Norman Meade) and Bert Berns. Published by Sloopy II Inc. (ASCAP), EMI Music Publishers (ASCAP) and Sony/ATV Music Publishers (ASCAP). Used with permission. "Piece of My Heart" written by Bert Berns and Jerry Ragovoy, published by Sloopy II Inc. (ASCAP), Sony/ATV Music Publishers (ASCAP) and Warner/Chappell Music Publishers (ASCAP). "Spirit in the Dark" by Aretha Franklin. Published by Springtime Music (ASCAP). Under license from Donald K. Wilson, Jr. Used with permission.



The actors and stage managers employed in this production are members of Actors' Equity Association, the union of professional actors and stage managers in the United States.



United Scenic Artists represents the designers and scenic painters for the American Theatre.



The Director and Choreographer are members of the Stage Directors and Choreographers Society, an independent national labor union.